

Financially-Constrained Roadway Projects

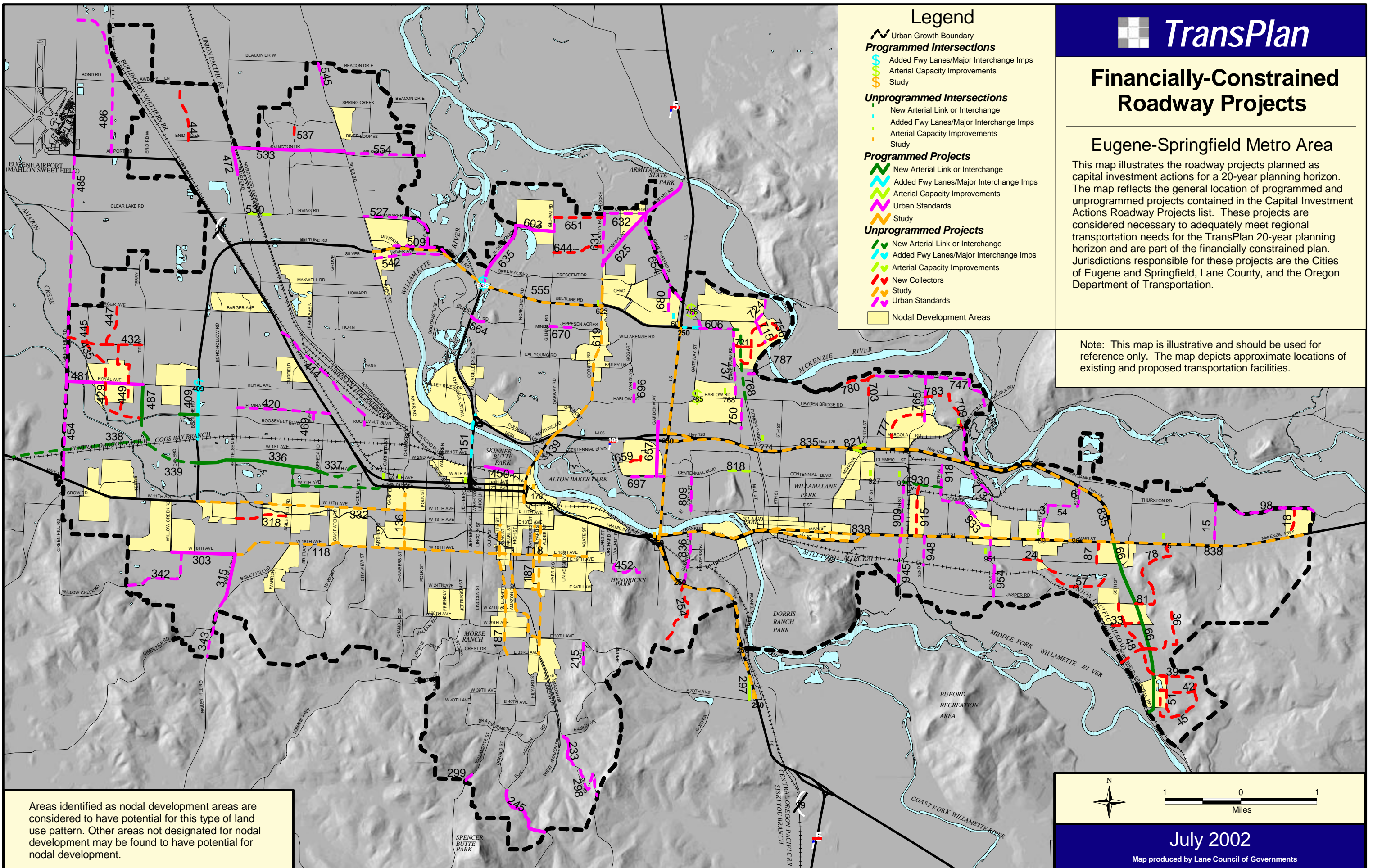
Eugene-Springfield Metro Area

This map illustrates the roadway projects planned as capital investment actions for a 20-year planning horizon. The map reflects the general location of programmed and unprogrammed projects contained in the Capital Investment Actions Roadway Projects list. These projects are considered necessary to adequately meet regional transportation needs for the TransPlan 20-year planning horizon and are part of the financially constrained plan. Jurisdictions responsible for these projects are the Cities of Eugene and Springfield, Lane County, and the Oregon Department of Transportation.

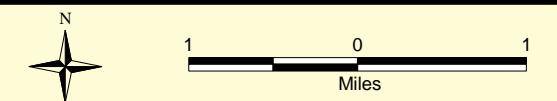
Note: This map is illustrative and should be used for reference only. The map depicts approximate locations of existing and proposed transportation facilities.

Legend

- Urban Growth Boundary
- Programmed Intersections**
 - Added Fwy Lanes/Major Interchange Imps
 - Arterial Capacity Improvements
 - Study
- Unprogrammed Intersections**
 - New Arterial Link or Interchange
 - Added Fwy Lanes/Major Interchange Imps
 - Arterial Capacity Improvements
 - Study
- Programmed Projects**
 - New Arterial Link or Interchange
 - Added Fwy Lanes/Major Interchange Imps
 - Arterial Capacity Improvements
 - Urban Standards
 - Study
- Unprogrammed Projects**
 - New Arterial Link or Interchange
 - Added Fwy Lanes/Major Interchange Imps
 - Arterial Capacity Improvements
 - New Collectors
 - Study
 - Urban Standards
- Nodal Development Areas



Areas identified as nodal development areas are considered to have potential for this type of land use pattern. Other areas not designated for nodal development may be found to have potential for nodal development.



July 2002

Map produced by Lane Council of Governments