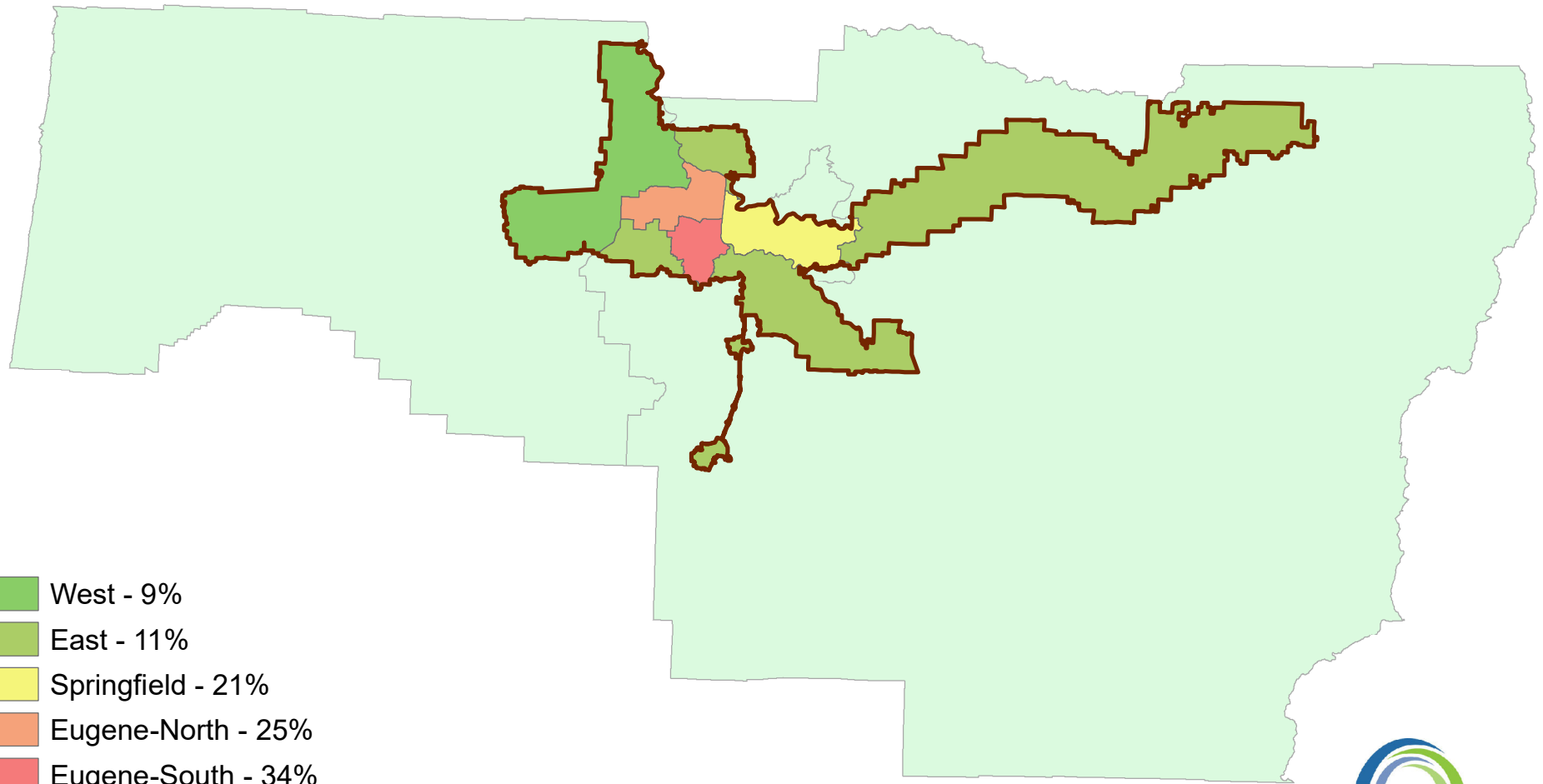


2018 Total Wages by County Commissioner District and inside of LTD's Boundary



- West - 9%
- East - 11%
- Springfield - 21%
- Eugene-North - 25%
- Eugene-South - 34%
- LTD Boundary
- Lane County Commissioner Districts

- Percentage is relative to total wages inside of LTD's service area.



The information on this map was derived from digital databases on Lane Council of Governments' regional geographic information system. Care was taken in the creation of this map, but it is provided "as is". LCOG cannot accept any responsibility for errors, omissions, or positional accuracy in the digital data or the underlying records. Current designations (e.g., zoning) for specific parcels should be confirmed with the appropriate jurisdictions. There are no warranties, expressed or implied, accompanying this product. However, notification of any errors will be appreciated.